



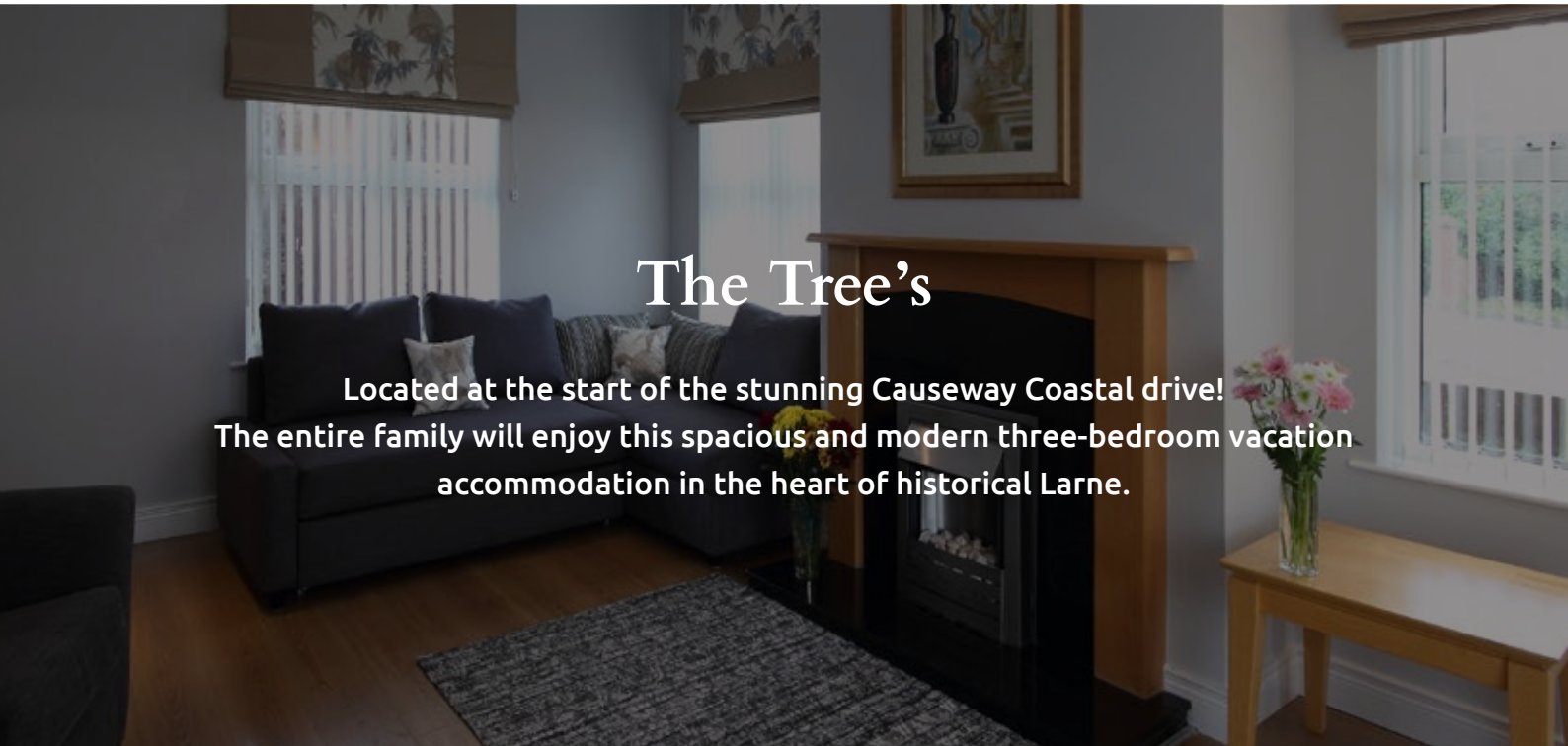
# THE TREE'S

SELF-CATERING  ACCOMMODATION  
LARNE



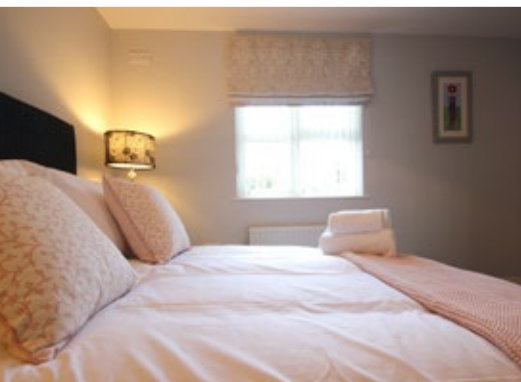
[www.thetreeslarne.com](http://www.thetreeslarne.com)

HOLIDAY OR BUSINESS RENTAL  
SELF-CATERING ACCOMMODATION



## The Tree's

Located at the start of the stunning Causeway Coastal drive!  
The entire family will enjoy this spacious and modern three-bedroom vacation accommodation in the heart of historical Larne.



### This spacious home is the perfect self-catering family vacation rental

Your start to the beautiful Antrim coastal drive begins here! At The Trees, there is room for the entire family in this modern house with three bedrooms, one bathroom, and large living space to accommodate five to seven people. Not only that, historical Larne is situated among some of the region's finest attractions along the East Antrim coastline.

The Trees', is near the East Antrim coast with its beautiful scenic sweeping bends and headlands travelling to the 'Glens of Antrim' and on to the 'Game of Thrones' sites at 'Ballintoy', 'Carrick-a-rede Rope Bridge', and the 'Giants Causeway' - all within a 1.5 hour drive.

[www.thetreeslarne.com](http://www.thetreeslarne.com)

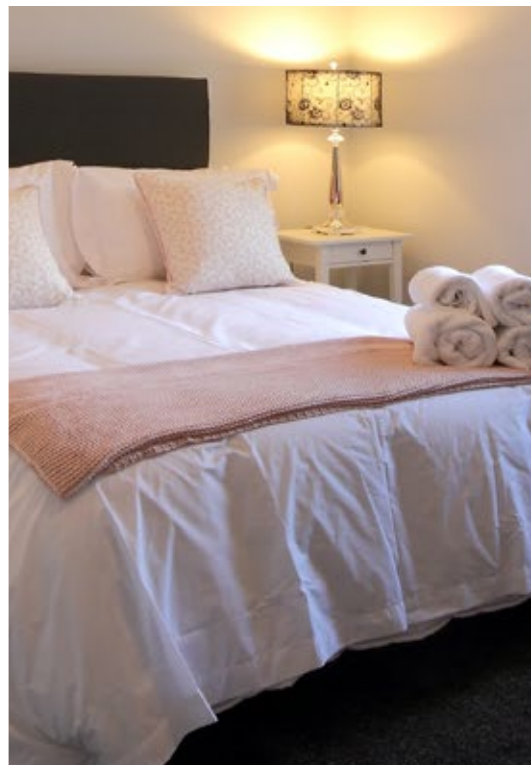
HOLIDAY OR BUSINESS RENTAL  
SELF-CATERING ACCOMMODATION

# ★★★★★ THE TREE'S

SELF-CATERING  ACCOMMODATION  
LARNE



[www.thetreeslarne.com](http://www.thetreeslarne.com)



## Amenities:

- Sleeps 4-8
- Bedroom 1: Double Bed
- Bedroom 2: Double Bed
- Bedroom 3: Bunk Bed
- Living Room: Sofa Bed

## Guests

- Entire Families
- Children of All Ages

## Welcome Pack

- Fresh milk, tea and coffee
- Weaten bread and muffins
- Butter and cheese

## Animals

- Pet Friendly

## Bathroom

- 1 Bathroom
- Shower and Bath
- Linens, Towels and Toiletries
- Hair Dryer / Iron

## Free WiFi

- Free WiFi On the Property

## Added Amenities

- Desk Area
- Electric Kettle
- Indoor Fireplace
- Kitchen w/Refrigerator, Oven, Microwave, Coffeemaker
- Garden Area
- Flat-Screen Smart-TV
- High Chair/Cot on Request
- Patio / BBQ Grill
- Toaster/Microwave
- Wardrobe Closet / Safe
- Washer and Dryer on premises
- Coffee Machine

## Policies

- Payment Methods: Credit Card, Bank Transfer or Cash
- Check In: 3pm
- Check Out: 12 Noon
- Cleaning Service: Weekly
- Damage fee of £200

## Transport & Accessibility

- Free Secure Onsite Parking
- Taxi is Available
- Close to Train Station
- Belfast International Airport-40 minutes (can get there by bus)
- Belfast – 20 Minutes